

# MCR Newsletter

## New CTRs Spring 2007 , Congrats!

We would like to acknowledge all of our newly Certified Tumor Registrars for the March 2007 testing cycle. Congratulations to:

**Carol Cannon**  
Singing River Hospital

**Dalphia Bankhead**  
UMMC

**Anna Derrick**  
MS Baptist Medical

**Lina Duck**  
MS Cancer Registry



**Donna Gooch**  
MS Cancer Registry

**Stephanie Land**  
UMMC

**Brenda Moore**  
UMMC

**Beth Pennington**  
Memorial Hospital at  
Gulfport

**Carla Triplett**  
Rush Foundation  
Hospital

### Inside this issue:

Tips for Abstracting	2
Fall Workshop	2
Welcome	2
What's New	3
Silver Certification	3
Recipe Corner	4

## Announcements

**The NAACCR CTR Exam Readiness Webinar** includes seven 2 hour sessions prepared to reflect the changes to the 2007 CTR Exam, a 1-hour review session and a short follow-up post exam session. The first session begins July 25, 2007 at 1 p.m. eastern time.

This webinar will be offered through the Mississippi Cancer Registry. Attendance is free of charge to those interested in attending. Please contact the Mississippi Cancer Registry at (601)815-5482 to sign up.

Source: NAACCR website  
[www.naacr.org](http://www.naacr.org).

### 2007 CTR EXAM

Application Deadline:  
July 31, 2007

Testing window:  
September 15-29,  
2007

For more information  
visit: [www.ctrexam.org](http://www.ctrexam.org)



---

# Tips for Abstracting

## Class of Case

### 1. Class "0"

If your facility only does a biopsy, and the patient is sent to another facility for more definitive treatment, this is a class of case "0". A biopsy can be as small as a FNA, or it can be incisional.

### 2. Class "1"

If your facility does all or part of the first course of treatment was performed at your facility and the physician gives any other type of treatment, then you are a class of case "1". Other treatments can

be: surgery, radiation, chemo, immunotherapy, hormonal, or observation. If a treatment plan is developed and the patient refuses treatment, then you are still a "1". If for some reason the treatment plan is changed during the 1<sup>st</sup> course of treatment this is still a "1".



A list of Class of Case, with examples, can be found in the *FORDS revised 2004* manual on pages 5 and 6.

Lina Duck, RHIT, CTR  
MCR Education Coordinator  
[lduck@crr.umsmc.edu](mailto:lduck@crr.umsmc.edu)

## Fall Workshop

We are in the process of planning the Fall Workshop and would like to hear from you. What would you like to have presented at this year's Fall Workshop.

Please send all requests to one of us by June 29, 2007. More details in September 2007 Newsletter.

Kristy Brister, RHIA, CTR  
[kabrister@crr.umsmc.edu](mailto:kabrister@crr.umsmc.edu)

Or

Lina Duck, RHIT, CTR  
[lduck@crr.umsmc.edu](mailto:lduck@crr.umsmc.edu)

**We are on the Web!**

**<http://mcr.umc.edu>**



## Welcome Our New Employees

Niesha Copeland, Student  
Mississippi Cancer Registry

Penny Thompson, Cancer Registry Tech.  
Singing River Hospital

Cherie Cotton, Cancer Registrar  
University of MS Medical Center

---

# Silver Certification for Mississippi Cancer Registry

By: Deirdre Rogers, Director,  
Mississippi Cancer Registry

The Mississippi Cancer Registry achieved Silver Certification from the North American Association of Central Cancer Registries (NAACCR) for the first time with the 2004 data. The 2004 data was 96.5% complete. In fact, the MCR met the Gold standard for every category of completeness and quality except percentage Death Certificate Only cases. The MCR would like to thank everyone who submitted data to the MCR. We could not have done this without your hard work. In addition, I would like to personally thank the staff of MCR for all of their hard work and dedication in achieving this goal.

Mississippi's 2003-2004 data is now published on the MCR web site and in NAACCR's *Cancer in North America* publication. Additionally, our data is currently published in the CDC's *United States Cancer Statistics* for 2003 and will be published in *United States Cancer Statistics* for 2004 which is scheduled for release in Fall 2007.



We celebrate this success but recognize we still have work to do. The CDC's National Program of Cancer Registries (NPCR) sets the standards for state cancer registries.

In January of each year, the MCR submits data to NPCR for review. CDC standards dictate that we should have 95% of the expected cases available as incident cases within 24 months of the close of the diagnosis year and 90% within 12 months of the close of the diagnosis year. We met the completeness and quality standards with our January 2007 submission for 24-month data

(2004 data). We were able to achieve the quality standards with our 12-month data (2005 data), but the data was only 77% complete. This is well below the 90% standard, so timeliness of data submissions will be a focus of the MCR this year. To assist you in gauging your timeliness, all 2006 and earlier cases should be submitted to the MCR by August 2007. If you need training or assistance in getting your administration to understand the importance of cancer registration, please contact our office.

In closing, I would like to again thank you for all of your hard work and dedication.

**A test known as "FISH (fluorescence in situ hybridization) assay has been approved by the FDA to screen patients for bladder cancer that has come back.**

## What's New in Bladder Cancer Research?

During the past 10 years, scientists have made great progress in learning about how cancer cells differ from normal cells. Several changes in the DNA of bladder cancers have been found. Now they are working to find out if the tests that identify the DNA changes are useful in finding bladder cancers that come back after treatment. Other studies are aimed at deciding whether these tests can help predict the course of the disease. This information may be useful in choosing treatment plans.

People who have had one bladder cancer are at risk for developing a new cancer in other parts of the urinary system. Researchers are now studying some vitamins and drugs that may be useful in preventing these new cancers from developing.

Source: American Cancer Society website

## University of Mississippi

2500 N. State St.  
Jackson, MS 39216

Phone: 601-815-5482

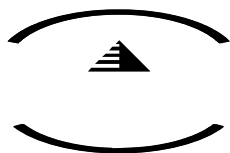
Fax: 601-815-5483

E-mail:

dgooch@crr.umsmed.edu

<http://mcr.umc.edu>

### Mississippi Cancer Registry



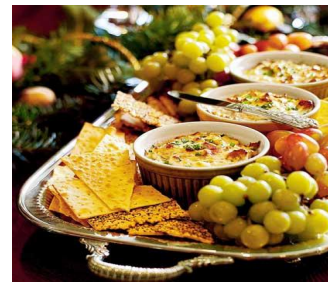
## Recipe Corner

### Blue Cheese-Bacon Dip

- 7 bacon slices, chopped
- 2 garlic cloves, minced
- 2 (8-oz.) packages cream cheese, softened
- 1/3 c. half- and- half
- 4 oz. crumbled blue cheese
- 2 tbsp. chopped fresh chives
- 3 tbsp. chopped walnuts, toasted
- Grape clusters
- Flatbread or assorted crackers

Cook chopped bacon in skillet over medium-high heat 10 minutes or until crisp. Drain bacon, and set aside. Add minced garlic to skillet, and saute´ 1 minute.

Beat cream cheese at medium speed



with an electric mixer until smooth. Add half-and-half, beating until combined. Stir in bacon, garlic, blue cheese, and chives. Spoon evenly with chopped walnuts, and serve with grape clusters and flatbread or assorted crackers.

Source: Southern Living, December 2004



### Spinach and Artichoke Dip

- 2 c. (8-oz) shredded part-skim mozzarella cheese, divided
- 1/2 c. fat-free sour cream
- 1/4c. (1-oz.) grated fresh Parmesan cheese, divided
- 1/4 tsp. black pepper
- 3 garlic cloves, crushed
- 1 (14-oz.) can artichoke hearts, drained and chopped
- 1 (8-oz) block 1/3-less fat cream cheese, softened

- 1 (8-oz) block fat-free cream cheese, softened
- 1/2 (10-oz.) pkg. frozen chopped spinach, thawed, drained, and squeezed dry
- 1 (13.5-oz.) pkg. baked tortilla chips (about 16 cups)

Preheat oven to 350°. Combine 1 1/2 c. mozzarella, sour cream, 2 tbsp. Parmesan, and next 6 ingredients (2 tbsp) Parmesan through spinach) in a large bowl, and stir until well-blended. Spoon mixture into a 1 1/2-quart baking dish. Sprinkle with 1/2 cup mozzarella and 2 tbsp. Parmesan. Bake at 350° for 30 minutes or until bubbly and golden brown. Serve with tortilla chips.

Source: Cooking Light, September 2000.



*Picnic Time!!!!*

We acknowledge the Centers for Disease Control and Prevention, University of Mississippi Medical Center, and the Mississippi Department of Health for their support of the MCR staff, and the printing and distribution of the monograph under cooperative agreement U55/CCU42235 awarded to MCR.